



Covid-19: Context indicators GeoStatistical-dashboard

Work in progress

Mayo, 2020



Integration of authoritative data. Statistical and Geospatial



Demographic and Economic data and indicators



Consejo Nacional de Evaluación de la Política de Desarrollo Social

Social Lag Index

SALUD

SECRETARÍA DE SALUD



COVID-19 Data

- Confirmed cases
- Suspect cases
- Negative cases
- Deaths

**Aggregation:
State and
Municipality**

Cartography (GeoStatistical National Framework)

Open source, open data and open standards

01

Basic web map visualization capabilities

- Zoom in, zoom out, drag
- Search
- Turning geographic layers on/off

02

Supports OGC and OSGeo interoperability standards

- WMS
- WMTS
- TMS
- WFS
- WCS
- WMS-T

03

Scalable


- Supports millions of geographic objects
- Concurrent access limited only by the capacity of the underlying infrastructure

Choroplastic maps

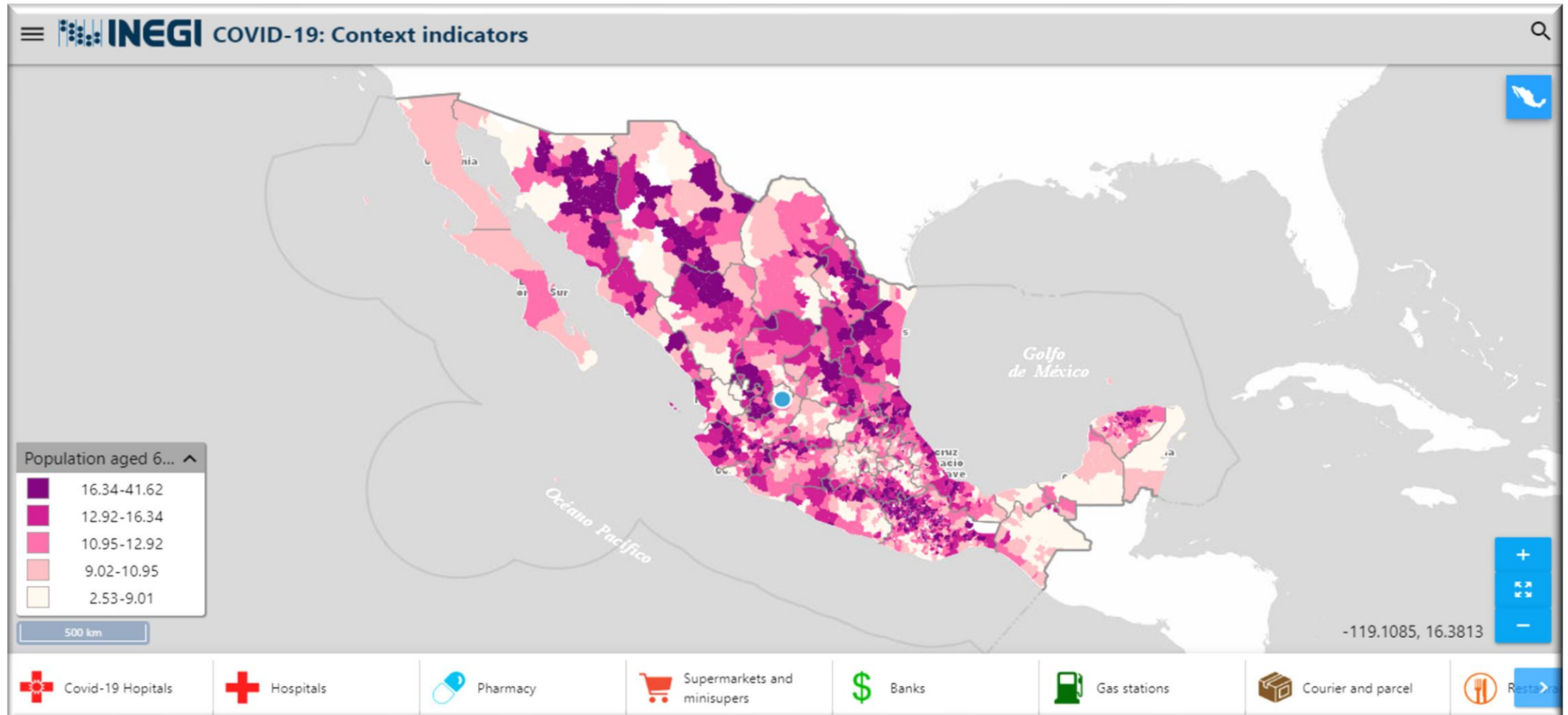
9 themes

Maps and data
COVID-19
Social development indices
Population
Economic characteristics
Health services
Households
Hospital infrastructure
Deaths from various conditions 2018
Risk diseases

28 indicators

Population
Municipal disaggregation
 Population density (hab / km2)
 Total population
 Population aged 60 and over%
Source: INEGI. Intercensal Survey Date: 2015

Percentage of population aged 60 and over per municipality (2015)




Statistical data card (state and municipality)


8 themes and 65 indicators

Aguascalientes, Aguascalientes MUNICIPALITY			
one	Summary	1 Summary	
2	Population		
3	Ethnicity		
4	Educational characteristics		
5	Economic characteristics		
6	Health services		
7	Households		
8	Hospital infrastructure		
9	Deaths due to various registered conditions 2018		
		INDICATOR	VALUE %
		Confirmed COVID-19 cases ⓘ	314
		Source: Secretary of Health. To download the information on COVID-19, go to the following route: https://coronavirus.gob.mx/datos/#DownZCSV , 11/05/2020 (11:34 h) X	
		COVID-19 suspect cases ⓘ	203
		Negative COVID-19 cases ⓘ	13
		Cases COVID-19 deaths ⓘ	13
		Population density (hab / km2) ⓘ	744.58

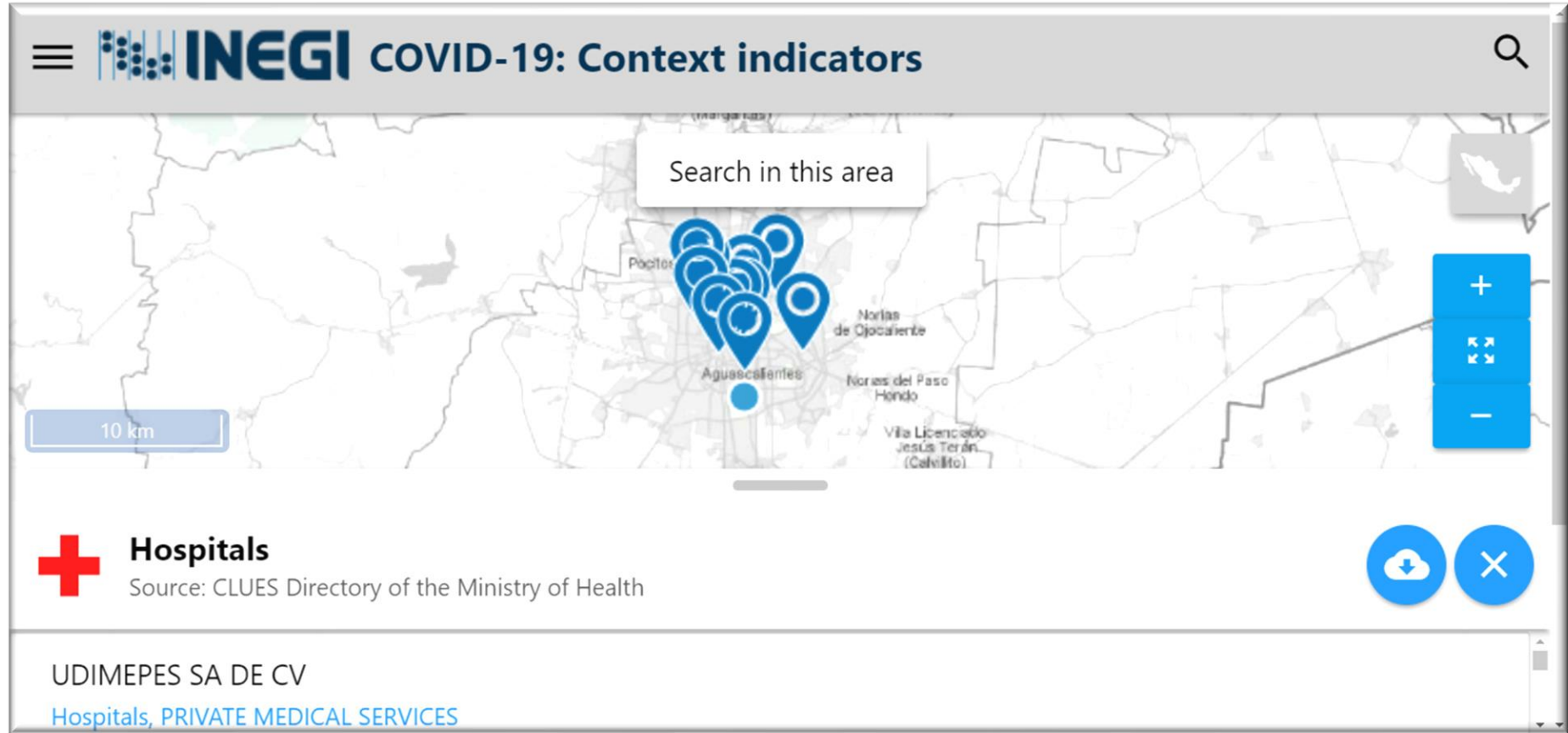
Find economic units

 Hospitals

 Pharmacy

 Supermarkets and minisupers

Among others



INEGI COVID-19: Context indicators

Search in this area

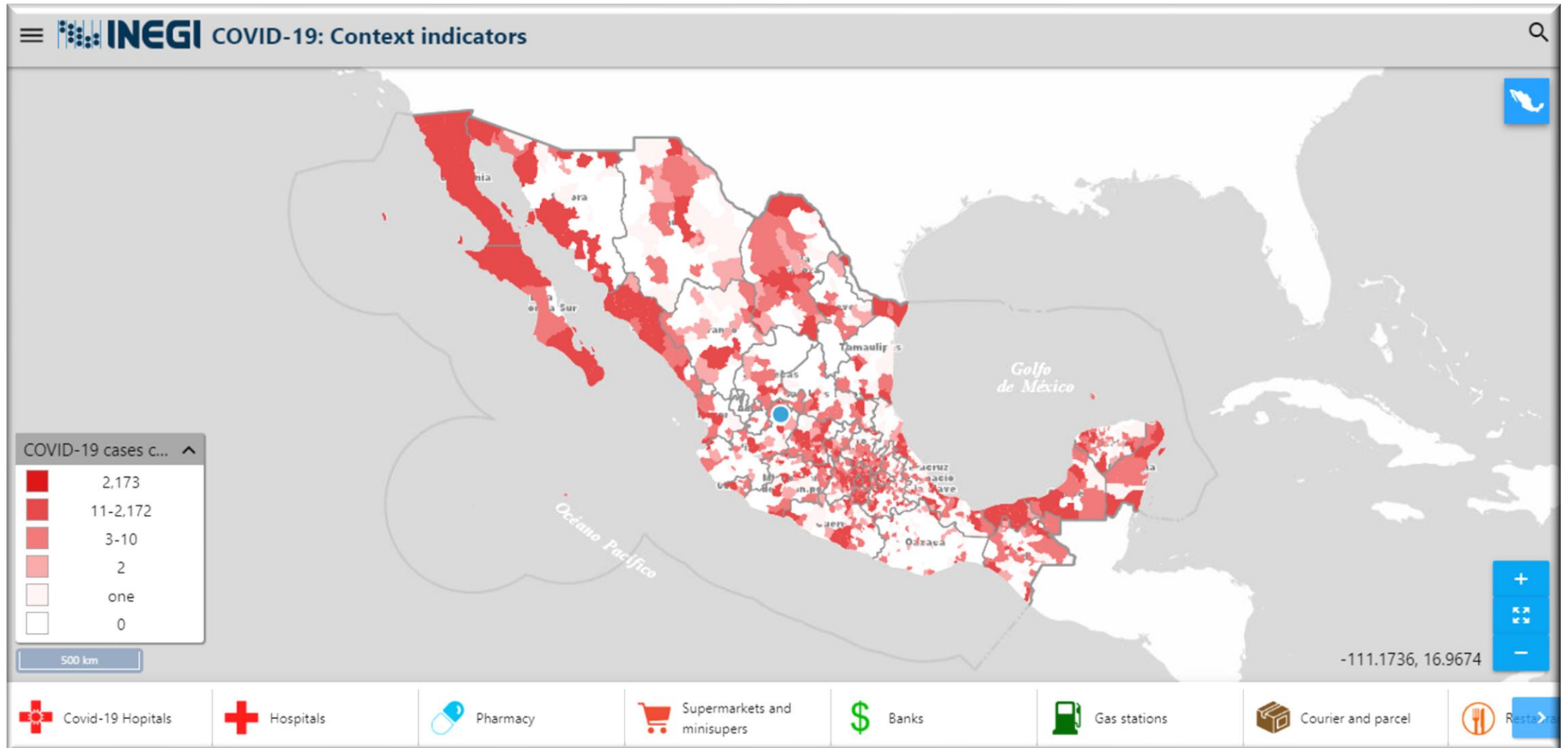
10 km

Hospitals
Source: CLUES Directory of the Ministry of Health

UDIMEPES SA DE CV
[Hospitals, PRIVATE MEDICAL SERVICES](#)

Near your location or any part of the country

Landing page



Next steps

- We're in the last stage of review and adjustments. In a few days it will be public.
- More data and statistical indicators of context will be added.
- New functionalities will be incorporated, e.g. comparative graphs.

Conociendo México

01 800 111 46 34

www.inegi.org.mx

atencion.usuarios@inegi.org.mx



INEGI Informa